

# Designer Intermediate Training

September 2021

# Before We Begin



We will send you the recording



Submit your questions anytime. We'll answer them throughout the session



Please complete the survey at the end

# Presenters



**Carlos Garcia**

National Commercial Sales  
Manager



**Ari Tsiounis**

Inside Sales  
Representative

# Agenda



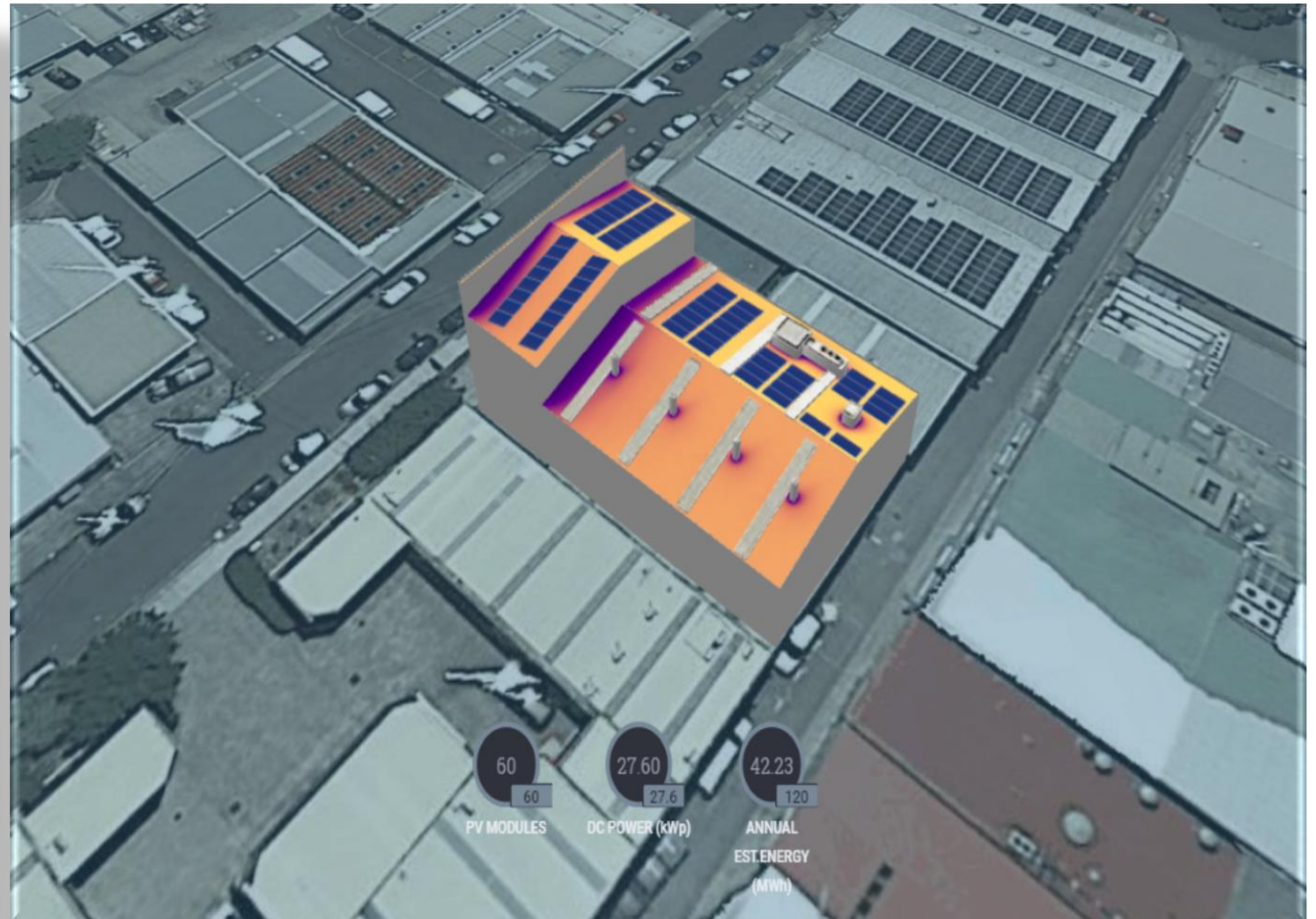
- Overview
- Live Demo
- Summary
- Survey



# Overview

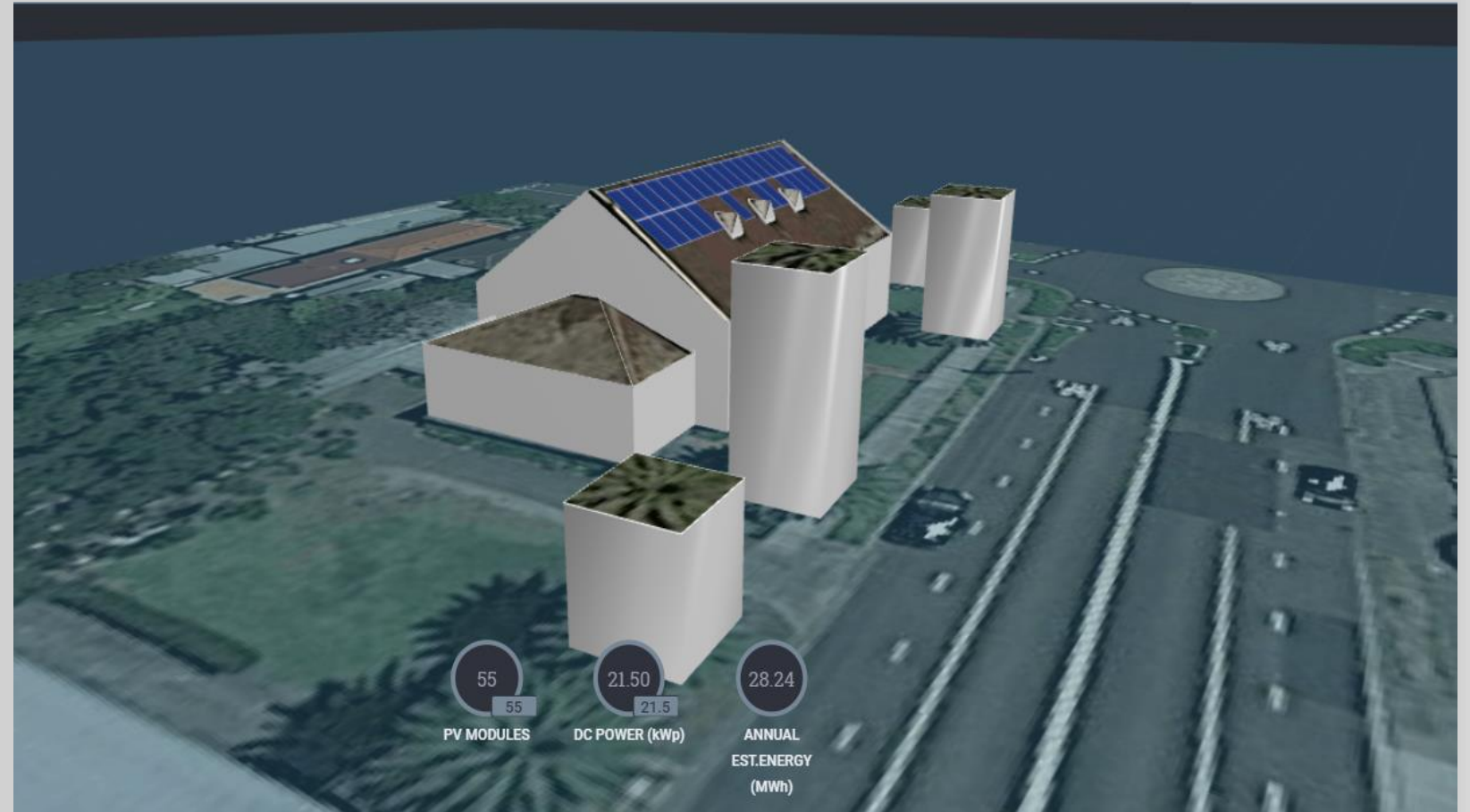
# Design Tools

- ▮ Importing an Image
- ▮ Split level roofs
- ▮ Obstacles
- ▮ Tilted panels
- ▮ Parapets



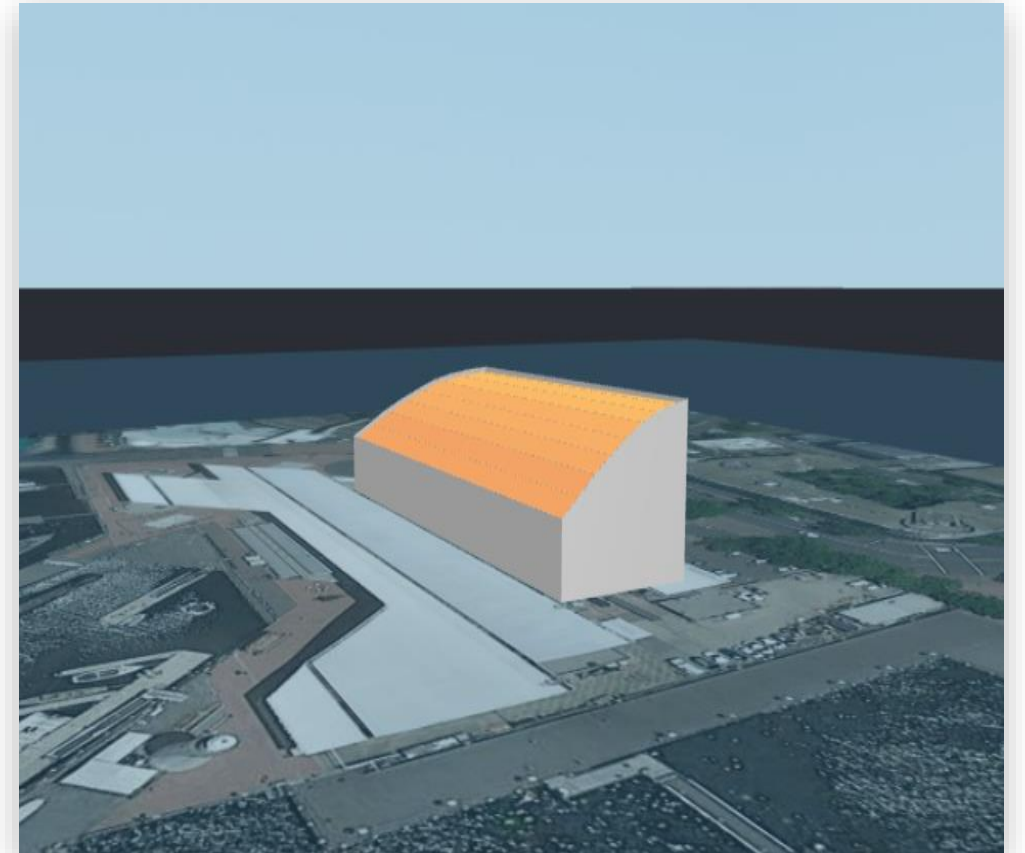
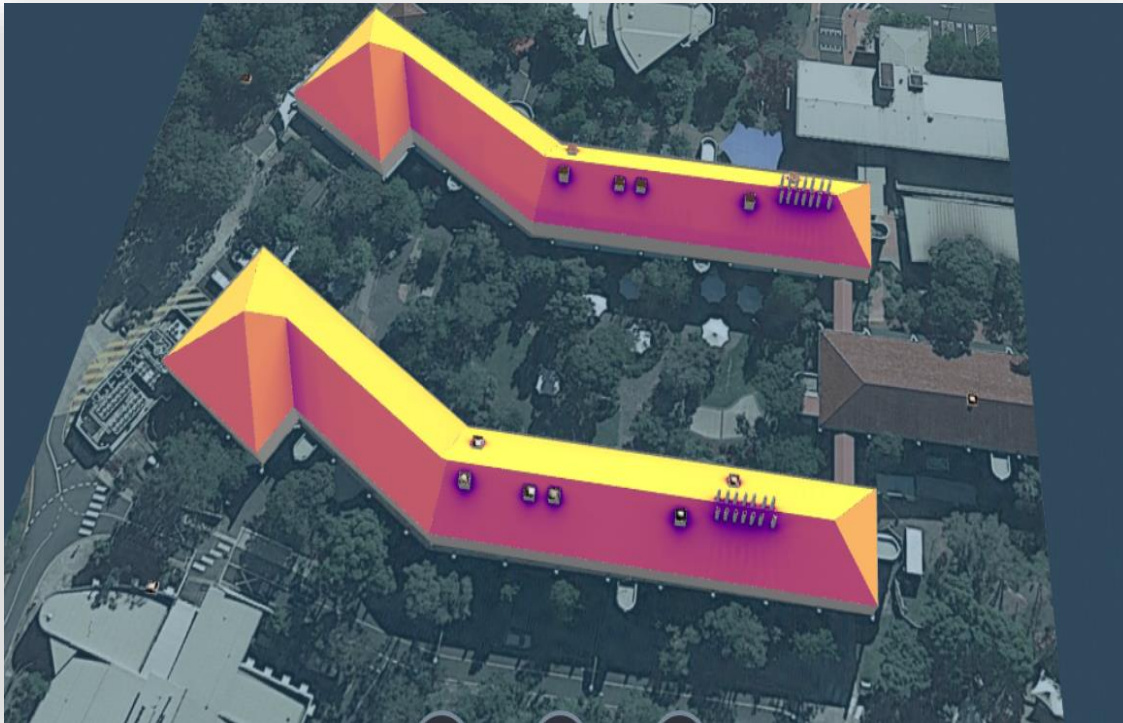
# Intermediate Roofs

- ▄ Trees
- ▄ Dormer windows
- ▄ Split level roofs
- ▄ Multi panel



# Advanced Roofs

- Multiple Buildings
- Multiple Obstacles
- Curved Roofs







# Live Demo

# Key Takeaways from This Webinar

- 1 Impress your customers**  
Import an image from up-to-date imagery or drone footage
- 2 Maximised roof utilisation**  
Easy solar panel placement and shade effects
- 3 Easier PV Design**  
Add multiple roofs, obstacles and shading analysis

# Questions & Survey





# Thank You!

## Cautionary Note Regarding Market Data & Industry Forecasts

This power point presentation contains market data and industry forecasts from certain third-party sources. This information is based on industry surveys and the preparer's expertise in the industry and there can be no assurance that any such market data is accurate or that any such industry forecasts will be achieved. Although we have not independently verified the accuracy of such market data and industry forecasts, we believe that the market data is reliable and that the industry forecasts are reasonable.

Version #: V.1.0